

Liquidity Hoarding and Interbank Market Spreads: The Role of Counterparty Risk

Florian Heider

ECB

Marie Hoerova

ECB

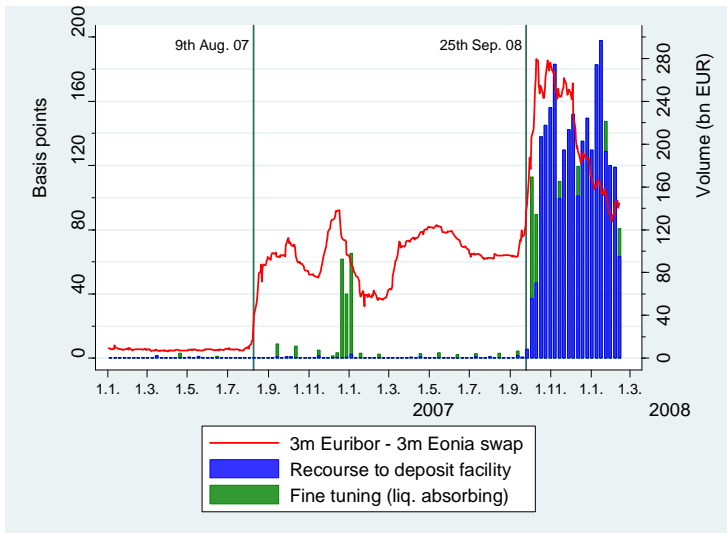
Cornelia Holthausen

ECB

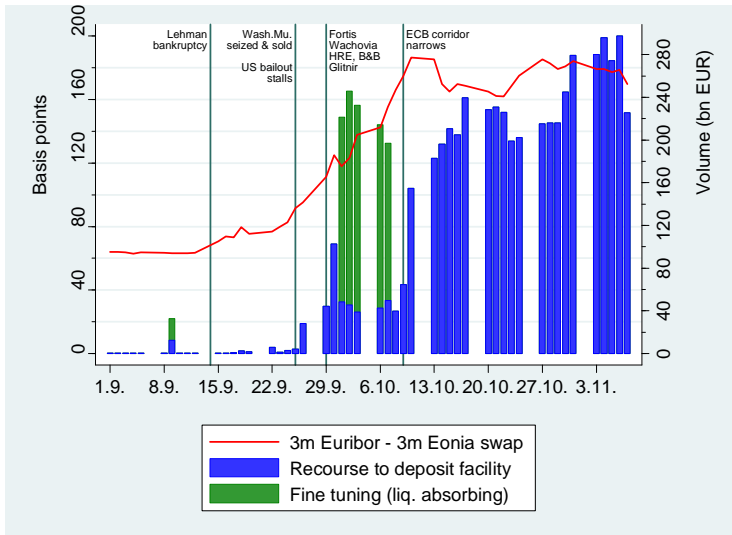
Conference on “Central Bank Liquidity Tools”
NY Fed, February 19, 2009

The views expressed are solely those of the authors.

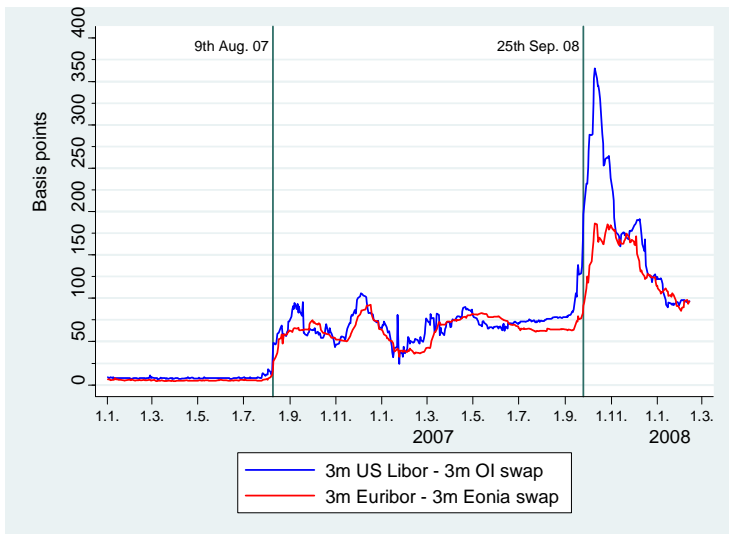
Interbank market: Some facts



Interbank market: Some facts



Interbank market: Some facts



What do we do?

- Study interbank market in the presence of counterparty risk

What do we do?

- Study interbank market in the presence of counterparty risk
- Parsimonious model to understand some of the mechanisms

What do we do?

- Study interbank market in the presence of counterparty risk
- Parsimonious model to understand some of the mechanisms
- Environment:
 - maturity transformation, tradeoff between liquidity and return

What do we do?

- Study interbank market in the presence of counterparty risk
- Parsimonious model to understand some of the mechanisms
- Environment:
 - maturity transformation, tradeoff between liquidity and return
 - idiosyncratic liquidity risk; no aggregate liquidity shocks

What do we do?

- Study interbank market in the presence of counterparty risk
- Parsimonious model to understand some of the mechanisms
- Environment:
 - maturity transformation, tradeoff between liquidity and return
 - idiosyncratic liquidity risk; no aggregate liquidity shocks
 - counterparty risk

What do we do?

- Study interbank market in the presence of counterparty risk
- Parsimonious model to understand some of the mechanisms
- Environment:
 - maturity transformation, tradeoff between liquidity and return
 - idiosyncratic liquidity risk; no aggregate liquidity shocks
 - counterparty risk
- Introduce asymmetric information about counterparty risk:
 - privately-observed shocks to asset risk *after* portfolio allocation

What do we do?

- Study interbank market in the presence of counterparty risk
- Parsimonious model to understand some of the mechanisms
- Environment:
 - maturity transformation, tradeoff between liquidity and return
 - idiosyncratic liquidity risk; no aggregate liquidity shocks
 - counterparty risk
- Introduce asymmetric information about counterparty risk:
 - privately-observed shocks to asset risk *after* portfolio allocation

What do we get?

- Three possible regimes with different market rates (depending on parameters):

What do we get?

- Three possible regimes with different market rates (depending on parameters):
 - I. full participation of borrowers and lenders

What do we get?

- Three possible regimes with different market rates (depending on parameters):
 - I. full participation of borrowers and lenders
 - II. safe borrowers drop out → adverse selection

What do we get?

- Three possible regimes with different market rates (depending on parameters):
 - I. full participation of borrowers and lenders
 - II. safe borrowers drop out → adverse selection
 - III. market breakdown:
 - all lenders drop out → liquidity hoarding
 - all borrowers drop out

What do we get?

- Three possible regimes with different market rates (depending on parameters):
 - I. full participation of borrowers and lenders
 - II. safe borrowers drop out → adverse selection
 - III. market breakdown:
 - all lenders drop out → liquidity hoarding
 - all borrowers drop out
- Framework to examine policy responses:
 - ex ante interventions
 - crisis management

What do we get?

- Three possible regimes with different market rates (depending on parameters):
 - I. full participation of borrowers and lenders
 - II. safe borrowers drop out → adverse selection
 - III. market breakdown:
 - all lenders drop out → liquidity hoarding
 - all borrowers drop out
- Framework to examine policy responses:
 - ex ante interventions
 - crisis management

The environment

- Three periods: $t = 0, 1,$ and 2

The environment

- Three periods: $t = 0, 1$, and 2
- Diamond-Dybvig consumers deposit with the bank at $t = 0$

The environment

- Three periods: $t = 0, 1$, and 2
- Diamond-Dybvig consumers deposit with the bank at $t = 0$
- Deposits fully insured \rightarrow no bank runs

The environment

- Three periods: $t = 0, 1,$ and 2
- Diamond-Dybvig consumers deposit with the bank at $t = 0$
- Deposits fully insured \rightarrow no bank runs
- Competitive, profit-maximizing banks

The environment

- Three periods: $t = 0, 1$, and 2
- Diamond-Dybvig consumers deposit with the bank at $t = 0$
- Deposits fully insured \rightarrow no bank runs
- Competitive, profit-maximizing banks
- At $t = 0$, banks can invest deposits in two assets:

Date	$t = 0$	$t = 1$	$t = 2$
Short-term liquid asset	-1	1	1
Long-term illiquid asset	-1	$l < 1$	R with prob. p , $pR > 1$ 0 with prob. $1 - p$

The environment

- Three periods: $t = 0, 1$, and 2
- Diamond-Dybvig consumers deposit with the bank at $t = 0$
- Deposits fully insured \rightarrow no bank runs
- Competitive, profit-maximizing banks
- At $t = 0$, banks can invest deposits in two assets:

Date	$t = 0$	$t = 1$	$t = 2$
Short-term liquid asset	-1	1	1
Long-term illiquid asset	-1	$l < 1$	R with prob. p , $pR > 1$ 0 with prob. $1 - p$

The environment: Private shocks to asset risk

- After investment is made, privately-observed shock to illiquid asset risk:

The environment: Private shocks to asset risk

- After investment is made, privately-observed shock to illiquid asset risk:
 - with prob. q , safer than expected $\rightarrow p_s > p$
 - with prob. $1 - q$, riskier than expected $\rightarrow p_r < p$
 - $p = qp_s + (1 - q)p_r$

The environment: Private shocks to asset risk

- After investment is made, privately-observed shock to illiquid asset risk:
 - with prob. q , safer than expected $\rightarrow p_s > p$
 - with prob. $1 - q$, riskier than expected $\rightarrow p_r < p$
 - $p = qp_s + (1 - q)p_r$
 - $pR > 1$, but can be that $p_r R < 1$

The environment: Private shocks to asset risk

- After investment is made, privately-observed shock to illiquid asset risk:
 - with prob. q , safer than expected $\rightarrow p_s > p$
 - with prob. $1 - q$, riskier than expected $\rightarrow p_r < p$
 - $p = qp_s + (1 - q)p_r$
 - $pR > 1$, but can be that $p_r R < 1$

- Assume: riskier assets have lower liquidation value, $l_s > l_r$

The environment: Private shocks to asset risk

- After investment is made, privately-observed shock to illiquid asset risk:
 - with prob. q , safer than expected $\rightarrow p_s > p$
 - with prob. $1 - q$, riskier than expected $\rightarrow p_r < p$
 - $p = qp_s + (1 - q)p_r$
 - $pR > 1$, but can be that $p_r R < 1$
- Assume: riskier assets have lower liquidation value, $l_s > l_r$
 - isomorphic to $R_s < R < R_r$ (riskier asset has a higher return)

The environment: Private shocks to asset risk

- After investment is made, privately-observed shock to illiquid asset risk:
 - with prob. q , safer than expected $\rightarrow p_s > p$
 - with prob. $1 - q$, riskier than expected $\rightarrow p_r < p$
 - $p = qp_s + (1 - q)p_r$
 - $pR > 1$, but can be that $p_r R < 1$
- Assume: riskier assets have lower liquidation value, $l_s > l_r$
 - isomorphic to $R_s < R < R_r$ (riskier asset has a higher return)
 - only need type-specific $\frac{R}{T}$ (opportunity cost of liquidation)

The environment: Private shocks to asset risk

- After investment is made, privately-observed shock to illiquid asset risk:
 - with prob. q , safer than expected $\rightarrow p_s > p$
 - with prob. $1 - q$, riskier than expected $\rightarrow p_r < p$
 - $p = qp_s + (1 - q)p_r$
 - $pR > 1$, but can be that $p_r R < 1$
- Assume: riskier assets have lower liquidation value, $l_s > l_r$
 - isomorphic to $R_s < R < R_r$ (riskier asset has a higher return)
 - only need type-specific $\frac{R}{T}$ (opportunity cost of liquidation)

The environment: Interbank market

- At $t = 1$, a bank faces uncertainty about the liquidity demand:

The environment: Interbank market

- At $t = 1$, a bank faces uncertainty about the liquidity demand:
 - fraction π_h of banks: high liquidity demand
 - fraction $\pi_l = 1 - \pi_h$ of banks: low liquidity demand
 - uncorrelated with the shock to the illiquid asset

The environment: Interbank market

- At $t = 1$, a bank faces uncertainty about the liquidity demand:
 - fraction π_h of banks: high liquidity demand
 - fraction $\pi_l = 1 - \pi_h$ of banks: low liquidity demand
 - uncorrelated with the shock to the illiquid asset
- Interbank market can develop: banks with excess liquidity lend to those with a shortage

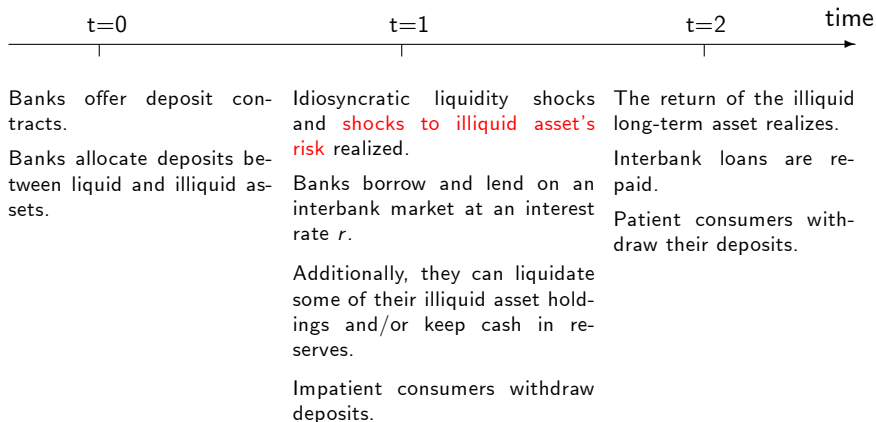
The environment: Interbank market

- At $t = 1$, a bank faces uncertainty about the liquidity demand:
 - fraction π_h of banks: high liquidity demand
 - fraction $\pi_l = 1 - \pi_h$ of banks: low liquidity demand
 - uncorrelated with the shock to the illiquid asset
- Interbank market can develop: banks with excess liquidity lend to those with a shortage
- Assume: Interbank market anonymous and competitive

The environment: Interbank market

- At $t = 1$, a bank faces uncertainty about the liquidity demand:
 - fraction π_h of banks: high liquidity demand
 - fraction $\pi_l = 1 - \pi_h$ of banks: low liquidity demand
 - uncorrelated with the shock to the illiquid asset
- Interbank market can develop: banks with excess liquidity lend to those with a shortage
- Assume: Interbank market anonymous and competitive

Timeline



Regime I: Full participation of borrowers and lenders

- Interbank interest rate r is given by no arbitrage:

Regime I: Full participation of borrowers and lenders

- Interbank interest rate r is given by no arbitrage:

$$(\pi_{lp} + \pi_{hp}) (1 + r) = (\pi_{lp} + \pi_{hp}) R$$

Regime I: Full participation of borrowers and lenders

- Interbank interest rate r is given by no arbitrage:

$$(\pi_l p p + \pi_h p) (1 + r) = (\pi_l p + \pi_h p) R$$

or

$$1 + r = R \frac{1}{p \pi_l + \pi_h}$$

Regime I: Full participation of borrowers and lenders

- Interbank interest rate r is given by no arbitrage:

$$(\pi_l p p + \pi_h p)(1 + r) = (\pi_l p + \pi_h p) R$$

or

$$1 + r = R \frac{1}{p\pi_l + \pi_h}$$

- Since $\frac{1}{p\pi_l + \pi_h} > 1$, there is a “risk premium” \rightarrow liquidity costly since lending is risky!

Regime I: Full participation of borrowers and lenders

- Interbank interest rate r is given by no arbitrage:

$$(\pi_l p p + \pi_h p) (1 + r) = (\pi_l p + \pi_h p) R$$

or

$$1 + r = R \frac{1}{p\pi_l + \pi_h}$$

- Since $\frac{1}{p\pi_l + \pi_h} > 1$, there is a “risk premium” \rightarrow liquidity costly since lending is risky!
- In Regime I:
 - risk premium $<$ liquidation premium for safer borrowers

Regime I: Full participation of borrowers and lenders

- Interbank interest rate r is given by no arbitrage:

$$(\pi_l p p + \pi_h p) (1 + r) = (\pi_l p + \pi_h p) R$$

or

$$1 + r = R \frac{1}{p \pi_l + \pi_h}$$

- Since $\frac{1}{p \pi_l + \pi_h} > 1$, there is a “risk premium” \rightarrow liquidity costly since lending is risky!
- In Regime I:
 - risk premium $<$ liquidation premium for safer borrowers
 - no impairment to market functioning

Regime I: Full participation of borrowers and lenders

- Interbank interest rate r is given by no arbitrage:

$$(\pi_l p p + \pi_h p) (1 + r) = (\pi_l p + \pi_h p) R$$

or

$$1 + r = R \frac{1}{p \pi_l + \pi_h}$$

- Since $\frac{1}{p \pi_l + \pi_h} > 1$, there is a “risk premium” \rightarrow liquidity costly since lending is risky!
- In Regime I:
 - risk premium $<$ liquidation premium for safer borrowers
 - no impairment to market functioning

Regime II: Adverse selection

- Safer borrowers drop out if risk premium too high \leftrightarrow interest rate r too high

Regime II: Adverse selection

- Safer borrowers drop out if risk premium too high \leftrightarrow interest rate r too high
- Only riskier borrowers in the market \rightarrow interest rate r_r :

$$1 + r_r = \frac{\pi_l p + \pi_h (1 - q) p_r}{\pi_l p p_r + \pi_h (1 - q) p_r} R$$

Regime II: Adverse selection

- Safer borrowers drop out if risk premium too high \leftrightarrow interest rate r too high
- Only riskier borrowers in the market \rightarrow interest rate r_r :

$$1 + r_r = \frac{\pi_l p + \pi_h (1 - q) p_r}{\pi_l p p_r + \pi_h (1 - q) p_r} R$$

- Adverse selection has two effects:

Regime II: Adverse selection

- Safer borrowers drop out if risk premium too high \leftrightarrow interest rate r too high
- Only riskier borrowers in the market \rightarrow interest rate r_r :

$$1 + r_r = \frac{\pi_l p + \pi_h (1 - q) p_r}{\pi_l p p_r + \pi_h (1 - q) p_r} R$$

- Adverse selection has two effects:
 - lenders get repaid less often

Regime II: Adverse selection

- Safer borrowers drop out if risk premium too high \leftrightarrow interest rate r too high
- Only riskier borrowers in the market \rightarrow interest rate r_r :

$$1 + r_r = \frac{\pi_l p + \pi_h (1 - q) p_r}{\pi_l p p_r + \pi_h (1 - q) p_r} R$$

- Adverse selection has two effects:
 - lenders get repaid less often
 - only riskier banks borrow

Regime II: Adverse selection

- Safer borrowers drop out if risk premium too high \leftrightarrow interest rate r too high
- Only riskier borrowers in the market \rightarrow interest rate r_r :

$$1 + r_r = \frac{\pi_l p + \pi_h (1 - q) p_r}{\pi_l p p_r + \pi_h (1 - q) p_r} R$$

- Adverse selection has two effects:
 - lenders get repaid less often
 - only riskier banks borrow
- Implies that $r_r > r$ holds

Regime II: Adverse selection

- Safer borrowers drop out if risk premium too high \leftrightarrow interest rate r too high
- Only riskier borrowers in the market \rightarrow interest rate r_r :

$$1 + r_r = \frac{\pi_l p + \pi_h (1 - q) p_r}{\pi_l p p_r + \pi_h (1 - q) p_r} R$$

- Adverse selection has two effects:
 - lenders get repaid less often
 - only riskier banks borrow
- Implies that $r_r > r$ holds

Regime III: Market breakdown

- Lack of supply: lenders drop out
 - interest rate r_r is high: $r_r > r...$

Regime III: Market breakdown

- Lack of supply: lenders drop out
 - interest rate r_r is high: $r_r > r...$ but is it high enough?

Regime III: Market breakdown

- Lack of supply: lenders drop out
 - interest rate r_r is high: $r_r > r$...but is it high enough?
 - lenders' outside option: reinvest in liquid asset

Regime III: Market breakdown

- Lack of supply: lenders drop out
 - interest rate r_r is high: $r_r > r$...but is it high enough?
 - lenders' outside option: reinvest in liquid asset
 - if $p_r (1 + r_r) < 1 \rightarrow$ lenders hoard liquidity

Regime III: Market breakdown

- Lack of supply: lenders drop out
 - interest rate r_r is high: $r_r > r$...but is it high enough?
 - lenders' outside option: reinvest in liquid asset
 - if $p_r(1 + r_r) < 1 \rightarrow$ lenders hoard liquidity
 - necessary that $p_r R < 1 \rightarrow$ return on riskier projects really bad!

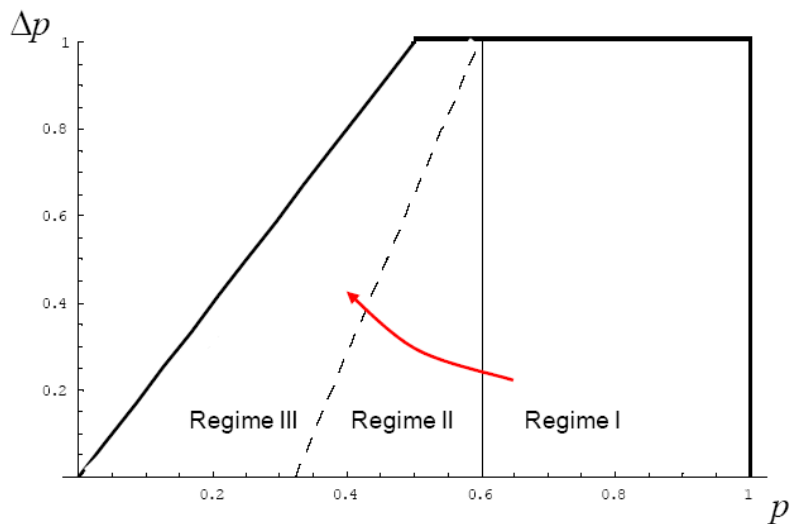
Regime III: Market breakdown

- Lack of supply: lenders drop out
 - interest rate r_r is high: $r_r > r$...but is it high enough?
 - lenders' outside option: reinvest in liquid asset
 - if $p_r(1 + r_r) < 1 \rightarrow$ lenders hoard liquidity
 - necessary that $p_r R < 1 \rightarrow$ return on riskier projects really bad!
- Lack of demand: all borrowers drop out
 - if risk premium $>$ liquidation premium for riskier borrowers

Regime III: Market breakdown

- Lack of supply: lenders drop out
 - interest rate r_r is high: $r_r > r$...but is it high enough?
 - lenders' outside option: reinvest in liquid asset
 - if $p_r(1 + r_r) < 1 \rightarrow$ lenders hoard liquidity
 - necessary that $p_r R < 1 \rightarrow$ return on riskier projects really bad!
- Lack of demand: all borrowers drop out
 - if risk premium $>$ liquidation premium for riskier borrowers

Comparative statics: Level and dispersion of risk



Policy responses: Ex ante

- Liquidity requirements:

Policy responses: Ex ante

- Liquidity requirements:
 - always feasible, prevent liquidation of safer banks

Policy responses: Ex ante

- Liquidity requirements:
 - always feasible, prevent liquidation of safer banks
 - but distort: 1) portfolio allocation; 2) price of liquidity

Policy responses: Ex ante

- Liquidity requirements:
 - always feasible, prevent liquidation of safer banks
 - but distort: 1) portfolio allocation; 2) price of liquidity
 - beneficial if l_s low or $\pi_h q$ high

Policy responses: Ex ante

- Liquidity requirements:
 - always feasible, prevent liquidation of safer banks
 - but distort: 1) portfolio allocation; 2) price of liquidity
 - beneficial if l_s low or $\pi_h q$ high

- Market transparency:

Policy responses: Ex ante

- Liquidity requirements:
 - always feasible, prevent liquidation of safer banks
 - but distort: 1) portfolio allocation; 2) price of liquidity
 - beneficial if l_s low or $\pi_h q$ high
- Market transparency:
 - two markets emerge: one for safer and one for riskier banks

Policy responses: Ex ante

- Liquidity requirements:
 - always feasible, prevent liquidation of safer banks
 - but distort: 1) portfolio allocation; 2) price of liquidity
 - beneficial if l_s low or $\pi_h q$ high
- Market transparency:
 - two markets emerge: one for safer and one for riskier banks
 - lower interest rate for safer borrowers: $r_{tr}^s < r < r_{tr}^r$

Policy responses: Ex ante

- Liquidity requirements:
 - always feasible, prevent liquidation of safer banks
 - but distort: 1) portfolio allocation; 2) price of liquidity
 - beneficial if l_s low or $\pi_h q$ high
- Market transparency:
 - two markets emerge: one for safer and one for riskier banks
 - lower interest rate for safer borrowers: $r_{tr}^s < r < r_{tr}^r$
 - no distortion but not feasible if risk premia high

Policy responses: Ex ante

- Liquidity requirements:
 - always feasible, prevent liquidation of safer banks
 - but distort: 1) portfolio allocation; 2) price of liquidity
 - beneficial if l_s low or $\pi_h q$ high
- Market transparency:
 - two markets emerge: one for safer and one for riskier banks
 - lower interest rate for safer borrowers: $r_{tr}^s < r < r_{tr}^r$
 - no distortion but not feasible if risk premia high

Policy responses: Ex post

- Liquidity provision by the central bank:

Policy responses: Ex post

- Liquidity provision by the central bank:
 - subsidized interest rate: $r_{CB} < r$

Policy responses: Ex post

- Liquidity provision by the central bank:
 - subsidized interest rate: $r_{CB} < r$
 - but CB still makes profit ← unit cost of (public) liquidity

Policy responses: Ex post

- Liquidity provision by the central bank:
 - subsidized interest rate: $r_{CB} < r$
 - but CB still makes profit ← unit cost of (public) liquidity
 - CB can take on liquidity from lenders → full intermediation

Policy responses: Ex post

- Liquidity provision by the central bank:
 - subsidized interest rate: $r_{CB} < r$
 - but CB still makes profit ← unit cost of (public) liquidity
 - CB can take on liquidity from lenders → full intermediation
- Interbank loan guarantees: must be sufficiently comprehensive

Policy responses: Ex post

- Liquidity provision by the central bank:
 - subsidized interest rate: $r_{CB} < r$
 - but CB still makes profit ← unit cost of (public) liquidity
 - CB can take on liquidity from lenders → full intermediation
- Interbank loan guarantees: must be sufficiently comprehensive
 - full: $1 + r_{FG} = R$; cost: $(1 - p) R\pi_h L_h$

Policy responses: Ex post

- Liquidity provision by the central bank:
 - subsidized interest rate: $r_{CB} < r$
 - but CB still makes profit \leftarrow unit cost of (public) liquidity
 - CB can take on liquidity from lenders \rightarrow full intermediation
- Interbank loan guarantees: must be sufficiently comprehensive
 - full: $1 + r_{FG} = R$; cost: $(1 - p) R \pi_h L_h$
 - partial: $1 + r_{PG} > R$; cost $(\hat{p} - p) (1 + r_{PG}) \pi_h L_h$

Policy responses: Ex post

- Liquidity provision by the central bank:
 - subsidized interest rate: $r_{CB} < r$
 - but CB still makes profit \leftarrow unit cost of (public) liquidity
 - CB can take on liquidity from lenders \rightarrow full intermediation
- Interbank loan guarantees: must be sufficiently comprehensive
 - full: $1 + r_{FG} = R$; cost: $(1 - p) R \pi_h L_h$
 - partial: $1 + r_{PG} > R$; cost $(\hat{p} - p) (1 + r_{PG}) \pi_h L_h$
 - $\text{cost}(\text{partial}) > \text{cost}(\text{full})$ possible as $r_{PG} > r_{FG}$

Policy responses: Ex post

- Liquidity provision by the central bank:
 - subsidized interest rate: $r_{CB} < r$
 - but CB still makes profit \leftarrow unit cost of (public) liquidity
 - CB can take on liquidity from lenders \rightarrow full intermediation
- Interbank loan guarantees: must be sufficiently comprehensive
 - full: $1 + r_{FG} = R$; cost: $(1 - p) R \pi_h L_h$
 - partial: $1 + r_{PG} > R$; cost $(\hat{p} - p) (1 + r_{PG}) \pi_h L_h$
 - $\text{cost}(\text{partial}) > \text{cost}(\text{full})$ possible as $r_{PG} > r_{FG}$
- Asset purchases: CB not exposed to liquidity risk

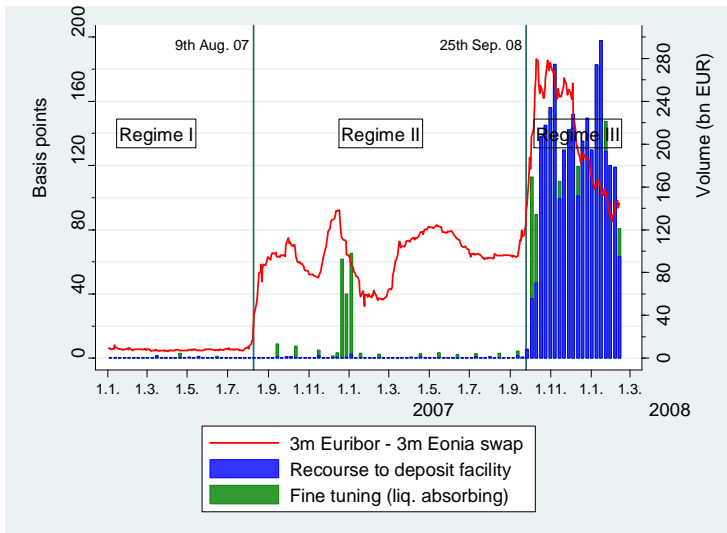
Policy responses: Ex post

- Liquidity provision by the central bank:
 - subsidized interest rate: $r_{CB} < r$
 - but CB still makes profit \leftarrow unit cost of (public) liquidity
 - CB can take on liquidity from lenders \rightarrow full intermediation
- Interbank loan guarantees: must be sufficiently comprehensive
 - full: $1 + r_{FG} = R$; cost: $(1 - p) R \pi_h L_h$
 - partial: $1 + r_{PG} > R$; cost $(\hat{p} - p) (1 + r_{PG}) \pi_h L_h$
 - $\text{cost}(\text{partial}) > \text{cost}(\text{full})$ possible as $r_{PG} > r_{FG}$
- Asset purchases: CB not exposed to liquidity risk
 - price $P > l_\theta = \text{"fire-sale"}$, P set only to reflect counterparty risk

Policy responses: Ex post

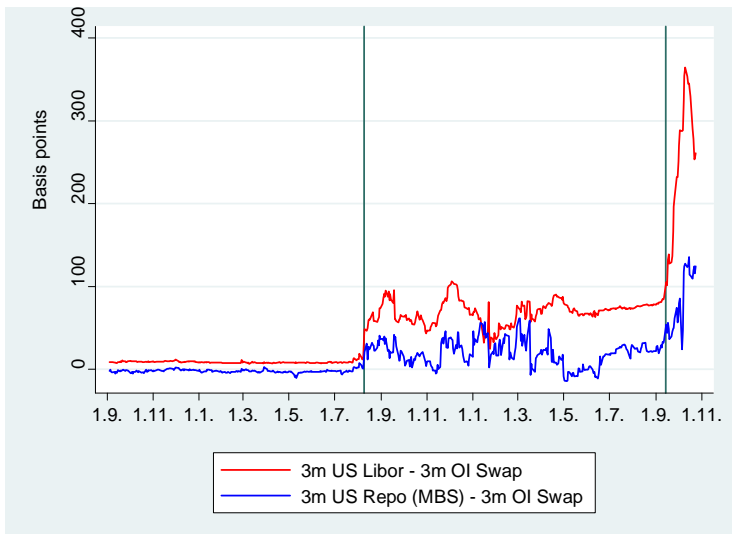
- Liquidity provision by the central bank:
 - subsidized interest rate: $r_{CB} < r$
 - but CB still makes profit \leftarrow unit cost of (public) liquidity
 - CB can take on liquidity from lenders \rightarrow full intermediation
- Interbank loan guarantees: must be sufficiently comprehensive
 - full: $1 + r_{FG} = R$; cost: $(1 - p) R \pi_h L_h$
 - partial: $1 + r_{PG} > R$; cost $(\hat{p} - p) (1 + r_{PG}) \pi_h L_h$
 - $\text{cost}(\text{partial}) > \text{cost}(\text{full})$ possible as $r_{PG} > r_{FG}$
- Asset purchases: CB not exposed to liquidity risk
 - price $P > l_\theta = \text{"fire-sale"}$, P set only to reflect counterparty risk

Summary



Thank you!

Interbank market: Secured vs Unsecured



Interbank market: Secured vs Unsecured

